

BEFORE YOU BEGIN

- Please read these instructions carefully to familiarize yourself with the required tools, materials, and installation sequences. Follow the sections that pertain to your particular installation. This will help you avoid costly mistakes.
- All information is based on the latest product information available at the time of publication. Kohler China Ltd. reserves the right to make changes in product characteristics, packaging, or availability at any time without notice.

安装之前

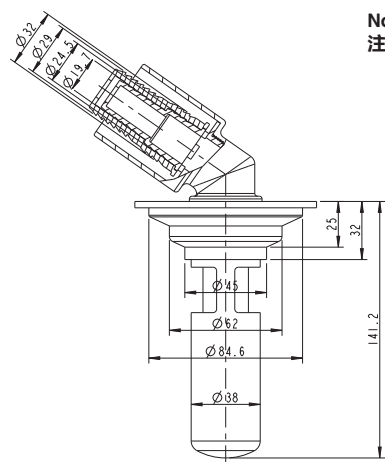
- 请仔细阅读此说明书以熟悉所需要的工具、材料及安装顺序。遵循适合您的特定安装要求的各项内容，避免昂贵的损失。
- 所有的资料是按最新出版的产品资料编写而成。科勒中国有限公司保留任何时候无须通知即可改变产品特性、包装或产品可供类型的权利。

ROUGHING-IN

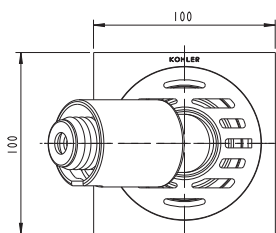
尺寸图

Reference Value
参考值

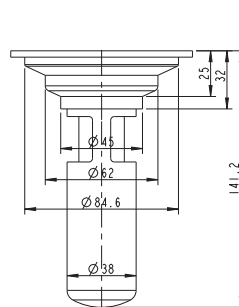
Unit: mm
单位：毫米



Note: The floor drain is applied for the drain pipe with I.D larger than 45mm.
注意：本地漏适用于内径大于45mm的排水管。



K-26228T



K-26229T

Kohler reserves the right to change marked dimensions without prior notice.
科勒公司保留随时变更图中标示尺寸的权利，无需另行通知。

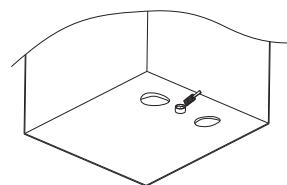
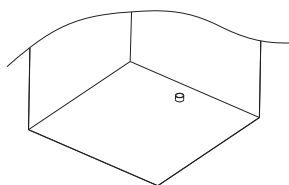
INSTALLATION

安装

K-26228T/K-26229T Universal instructions for installation on floor

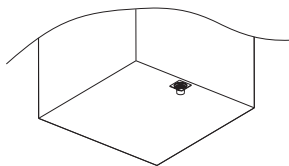
K-26228T/K-26229T 地面通用安装说明

1. Confirm installation location. Clean floor and waste pipe.
确定安装地漏的位置，清理地面和排水管口。
2. Pour some mortar on the floor drain site. Apply some adhesive over the inside wall of the waste pipe.
在预定位置倒上水泥砂浆，并在排水管内壁涂上密封胶。

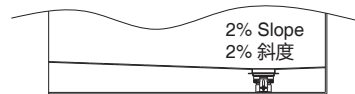


KOHLER CHINA INVESTMENT CO., LTD NO. 158, JIANG CHANG SAN ROAD,
JING'AN DISTRICT, SHANGHAI, PRC POST CODE: 200436
科勒（中国）投资有限公司 上海市静安区江场三路 158 号 邮编：200436

3. Insert the floor drain body outlet back into the waste pipe.
将地漏本体排水口套回地面排水管内。



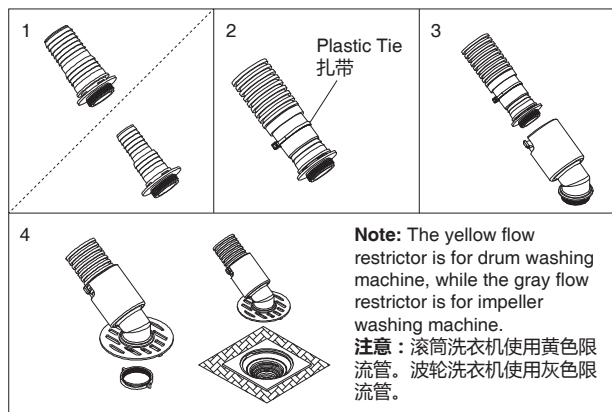
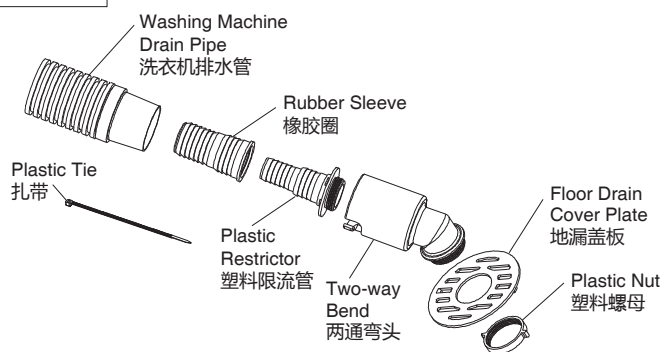
4. If there is no leakage, finish the following layer in proper order: mortar, primer coat, water-proof sealant, cement and tiles. The finished floor shall have a 2% slope.
Place the inner core of the floor drain into its main body and press it tightly.
经测试无渗漏后，依次完成砂浆层，底漆层，防水层，水泥层和瓷砖层。完成后的瓷砖面应向地漏有2%的斜度。
将地漏内芯放入地漏本体，压紧。



K-26228T Instructions for installation of the floor drain and washing machine drain pipe

K-26228T 地漏与洗衣机排水管安装说明

List Of Parts 零件清单



Installation steps:

1. Assemble the plastic sleeve onto the plastic restrictor (please determine whether a plastic sleeve is needed or not according to the size of the washing machine drain pipe);
2. Assemble the washing machine drain pipe onto the plastic sleeve or plastic restrictor; Make sure there is no leakage after checking against STEP 5, and fix it with a band;
3. Screw and tighten the assembled parts into the two-way bend;
4. Slide the floor drain cover plate onto the two-way bend, and then tighten with a plastic nut; finally, install onto the floor drain body.
5. Check for water leakage when the washing machine drains water, if yes, please bind the PTFE tape at the corresponding position of the rubber sleeve or the restrictor, re-confirm water leakage.

安装步骤：

1. 将橡胶圈插入塑料限流管上（请根据洗衣机排水管规格选择是否需要橡胶圈）；
2. 将洗衣机排水管插入橡胶圈或塑料限流管上；经步骤5检验，确认不漏水后，用扎带固定；
3. 将组装好的组件旋入两通弯头螺纹上，并旋紧；
4. 将地漏盖板套入，并用塑料螺母旋紧，最后装入地漏本体上。
5. 检查洗衣机排水时是否漏水，如有漏水，请在橡胶圈或限流管上对应位置缠上生料带，并再次确认是否漏水。

CARE AND CLEANING

For best results, keep the following in mind when caring for your KOHLER product:

- Use a mild detergent such as liquid dishwashing soap and warm water for cleaning. Do not use abrasive cleaners that may scratch or dull the surface.
- Carefully read the cleaner product label to ensure the cleaner is safe for use on the material.
- Always test your cleaning solution on an inconspicuous area before applying to the entire surface.
- Do not allow cleaners to sit or soak on the surface.
- Wipe surfaces clean and rinse completely with water immediately after cleaner application. Rinse and dry any overspray that lands on nearby surfaces.
- Use a soft, dampened sponge or cloth. Never use an abrasive material such as a brush or scouring pad to clean surfaces.
- When it is necessary to clear the inner core of the floor drain during use, please lift it out directly. When installing it, please place it into it directly and press it tightly.

护理和清洁

为了长久使用，请在护理您的科勒产品时注意以下几点：

- 使用中性清洁剂，例如液体洗洁精和温水进行清洗。请不要使用研磨清洁剂，以免刮划或使表面变钝。
- 请仔细阅读清洁剂说明以确认其能够在产品上安全使用。
- 在面积使用清洁剂之前，请务必先在不显眼处先试验清洁方式。
- 请不要将产品表面浸泡在清洁剂中。
- 使用清洁剂后，请立即擦拭并用水彻底清洗。清洗并擦干溢溅在周围表面的清洁剂。
- 使用柔软湿润的海绵或清洁布，请勿使用研磨材质，例如刷子和百洁布来清洁表面。
- 使用过程中如需清理地漏内芯，请将内芯直接提出，装回内芯时，请直接放入压紧。