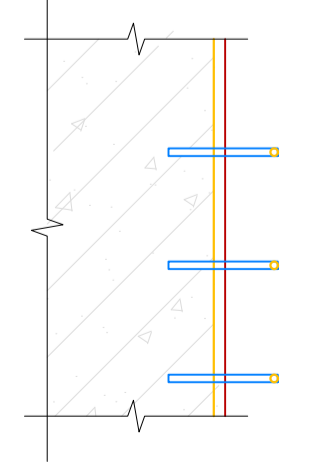
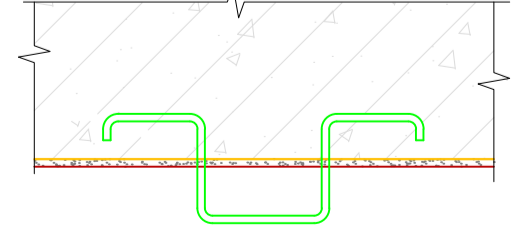
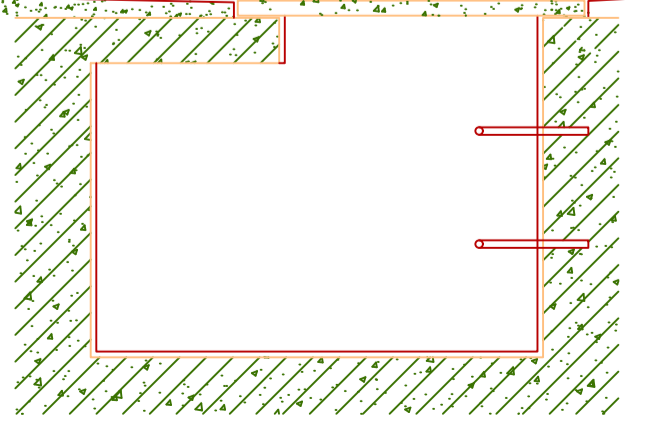
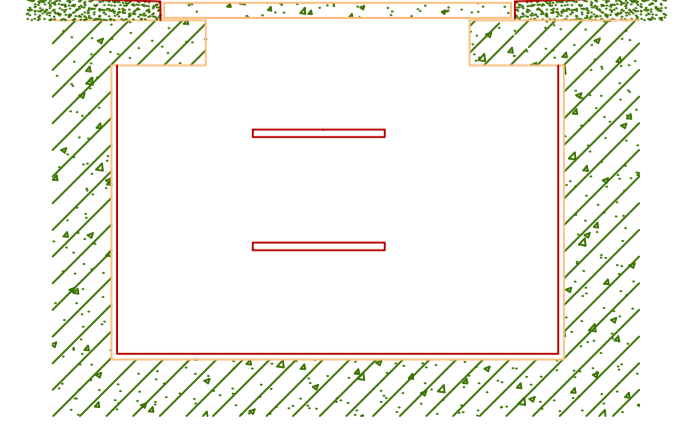
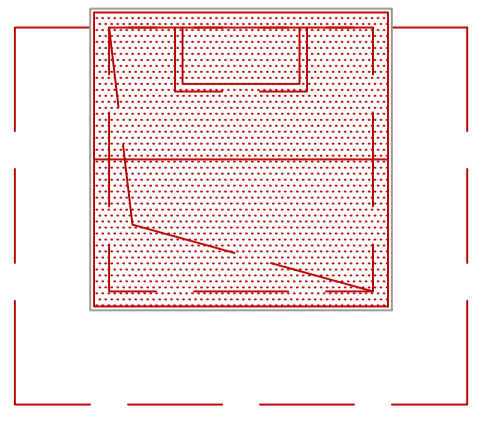


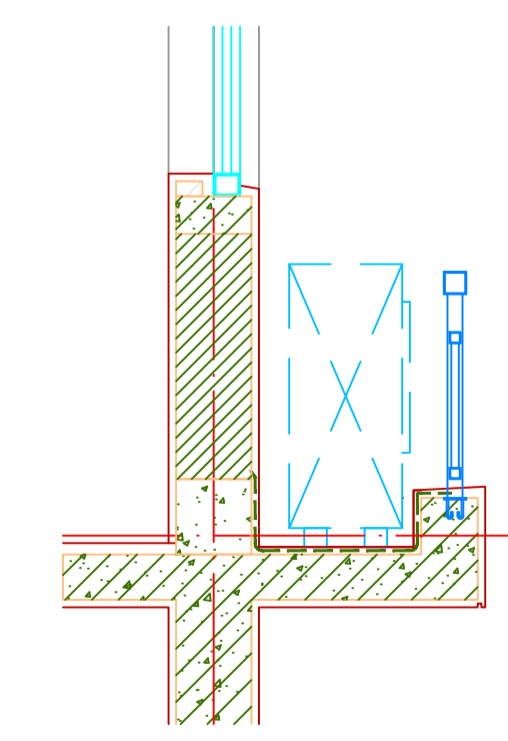
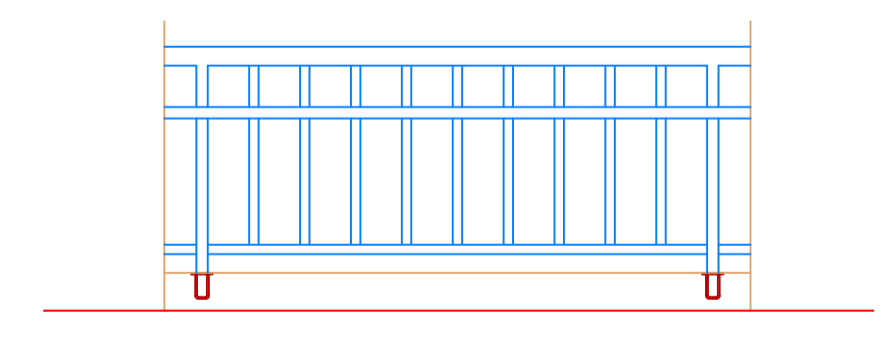
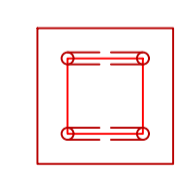
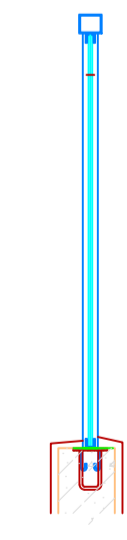
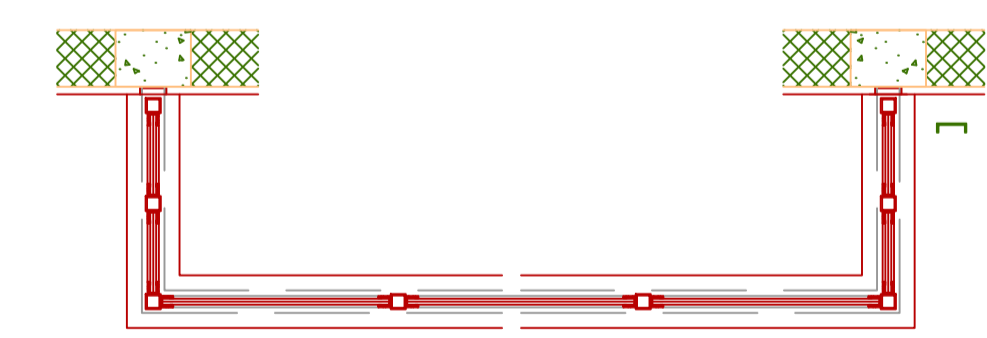
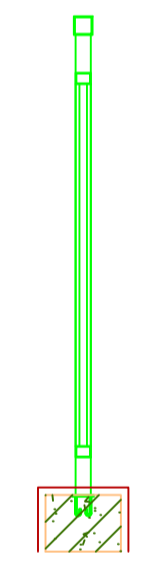
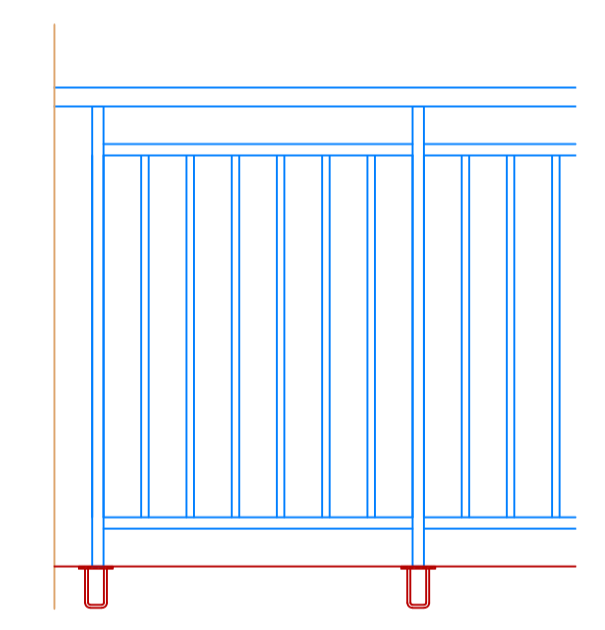
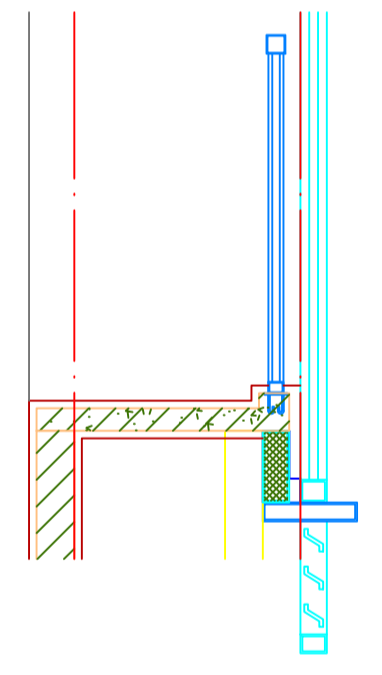
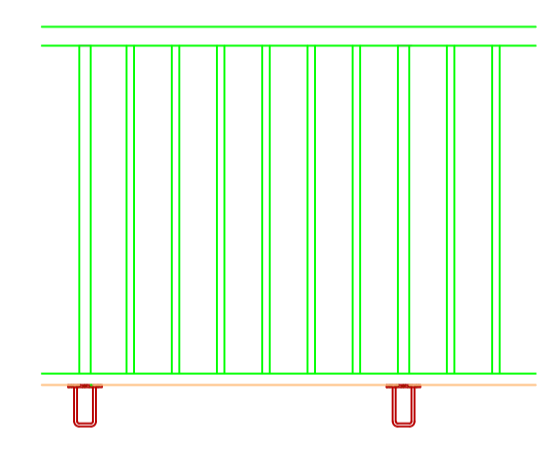
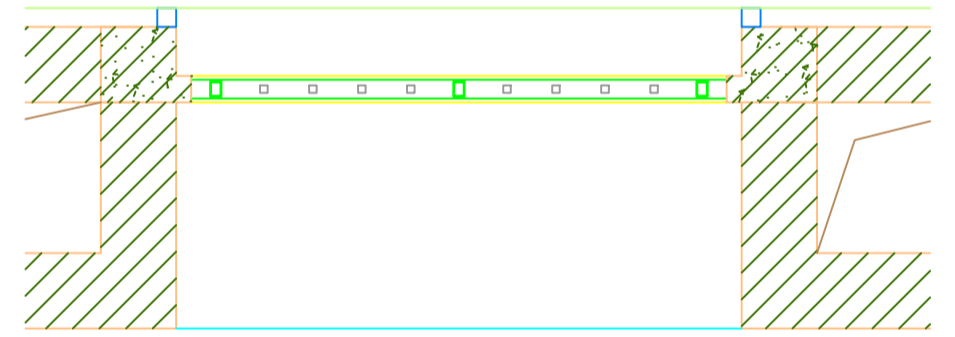
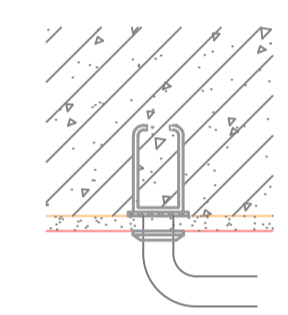
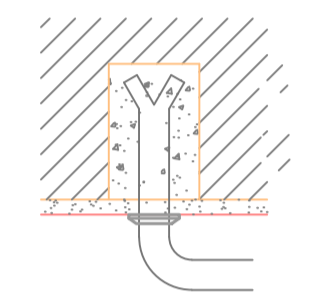
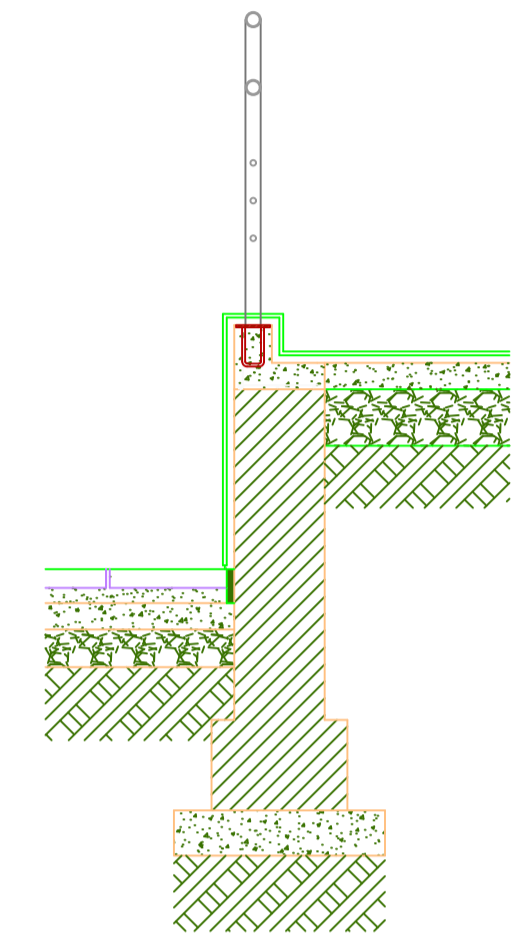
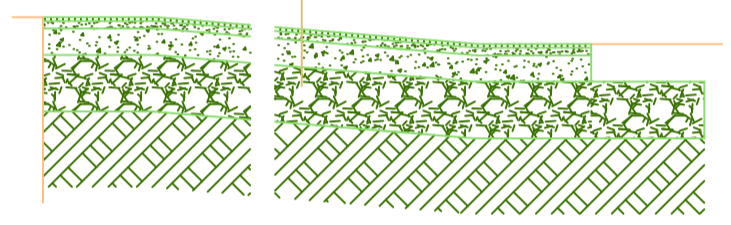
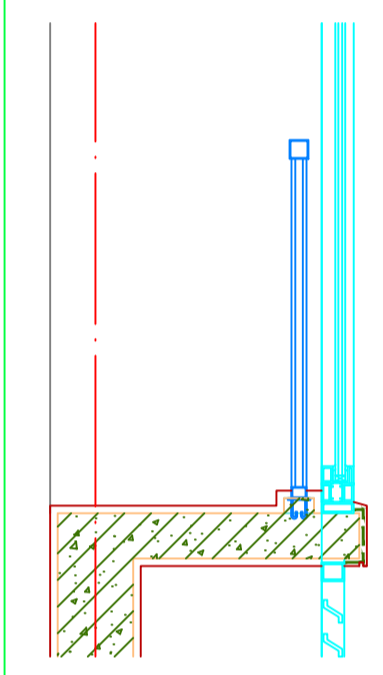
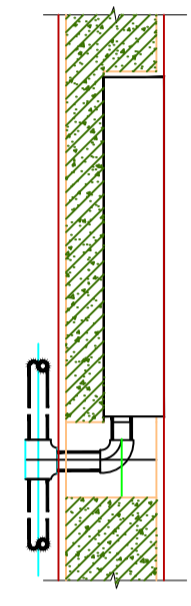
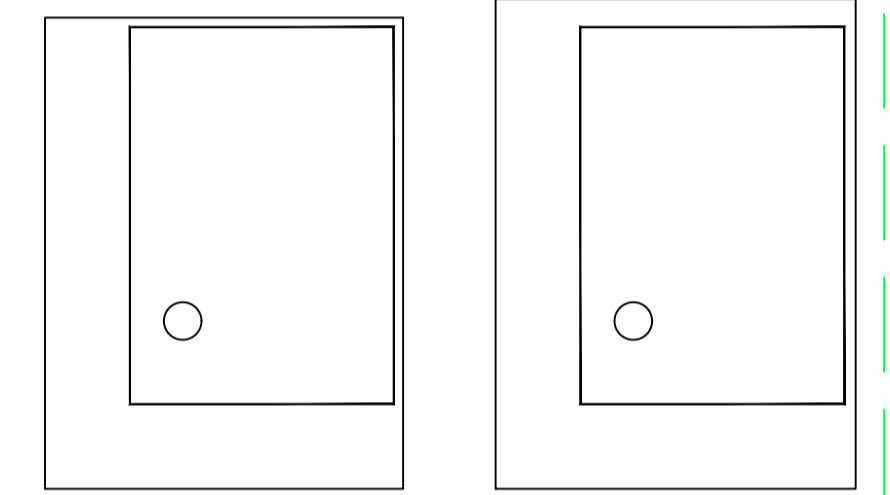
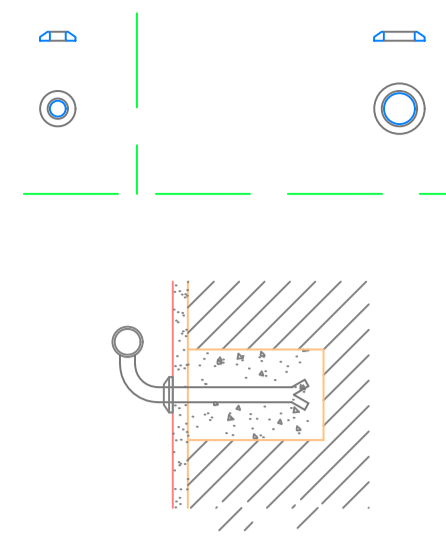
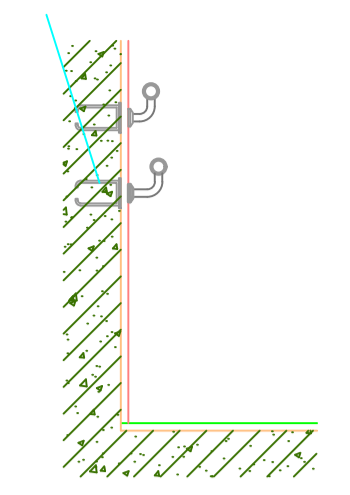
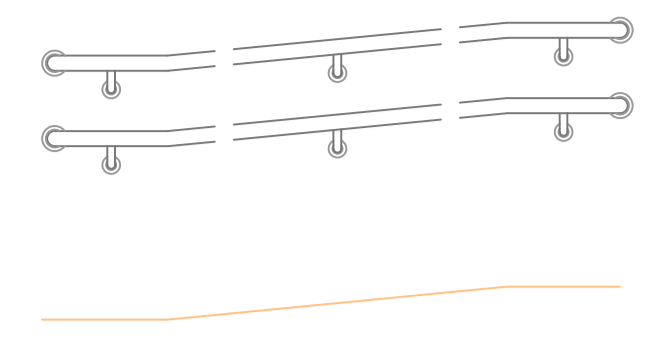
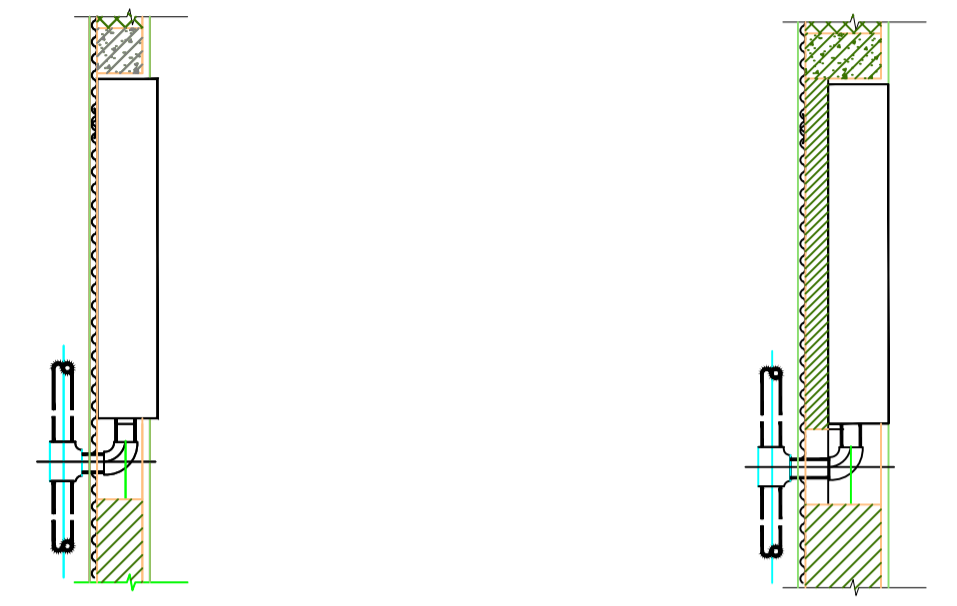
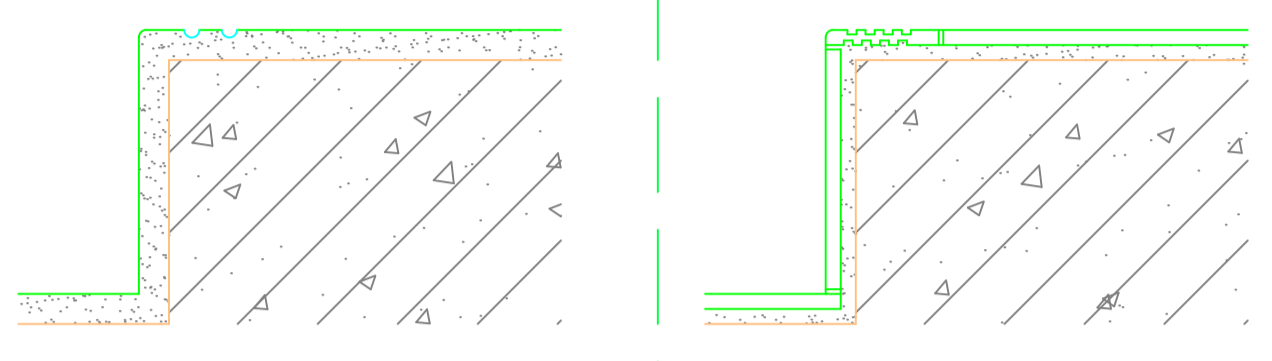
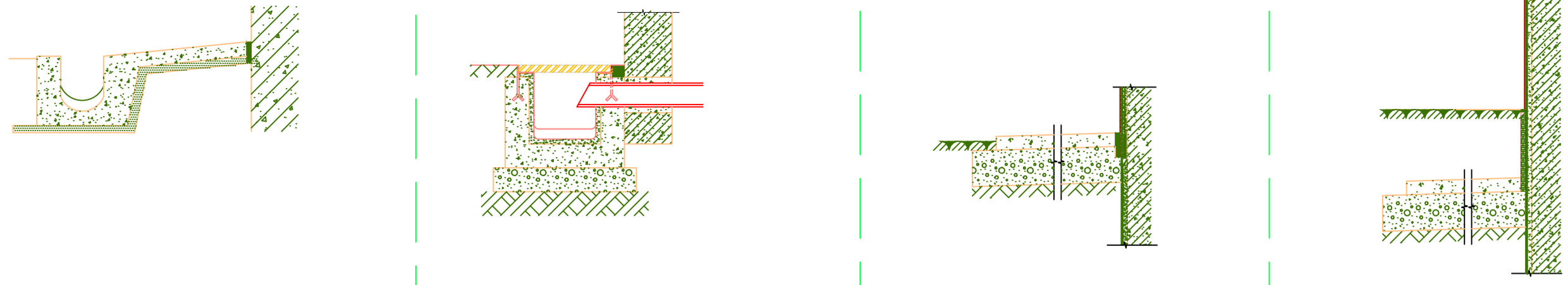
抗裂砂浆薄抹面层  
(复合耐碱玻纤网格布)

塑料滴水 (成品) 2.0

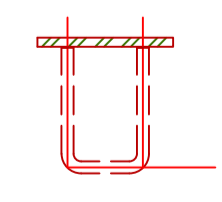
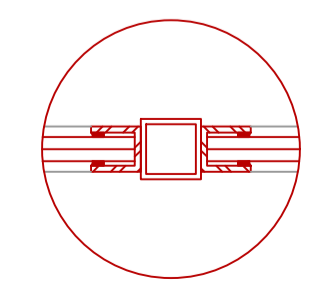
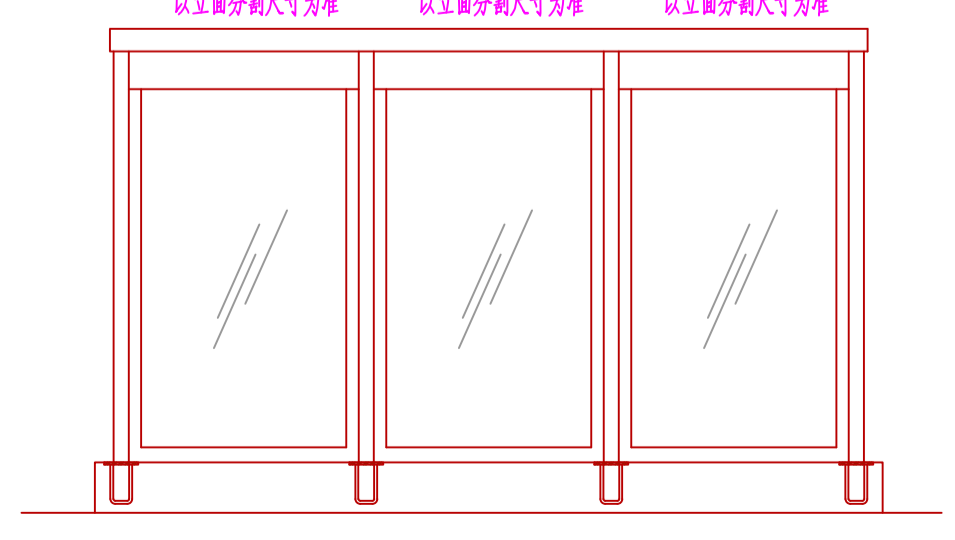
塑料滴水 (成品) 2.0



工程号 Ejt. No.	图号 Dwg. No.
专业 Dept.	建筑 Stage
比例 Scale	日期 Date
版次 Ver.	备注 Remark



以立面分割尺寸为准 以立面分割尺寸为准 以立面分割尺寸为准



工程号 Proj. No.	—	图号 Fig. No.	—
专业 Dept.	建筑	阶段 Stage	—
比例 Scale	—	日期 Date	—
版次 Ver.	—	备注 Remark	—